

WaterTech

COMPANY
MANAGEMENT SYSTEM
CERTIFIED BY DNV GL
= ISO 9001 =
= ISO 14001 =



MID MI-001

Multi - jet water meter
with dry dial counter

BETA SOC

BETA SDC

Multi - jet water meter with dry dial counter

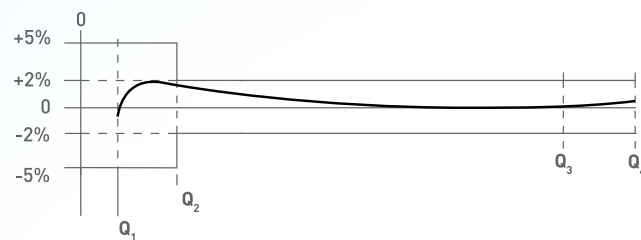
PERFORMANCE ACCORDING TO MID 2014/32/UE DIRECTIVE * AS AMENDED

SIZE		PERMANENT FLOW	MAXIMUM FLOW	TRANSITIONAL FLOW	MINIMUM FLOW	WORKING PRESSURE	MINIMUM READING	MAXIMUM READING	TEMPERATURE CLASS
(mm)	(inch)	Q ₃ (m ³ /h)	Q ₄ (m ³ /h)	Q ₂ (L/h)	Q ₁ (L/h)	(bar)	(l)	(m ³)	
13/15	1/2"	2,5	3,125	50,0	31,3	16	0,05	99.999	T30/T50
20	3/4"	4,0	5,000	80,0	50,0	16	0,05	99.999	T30/T50
25	1"	6,3	7,875	126,0	78,8	16	0,05	99.999	T30/T50
30	1 1/4"	10,0	12,500	200,0	125,0	16	0,05	99.999	T30/T50
40	1 1/2"	16,0	20,000	320,0	200,0	16	0,5	999.999	T30/T50
50	2"	25,0	31,250	500,0	312,5	16	0,5	999.999	T30/T50

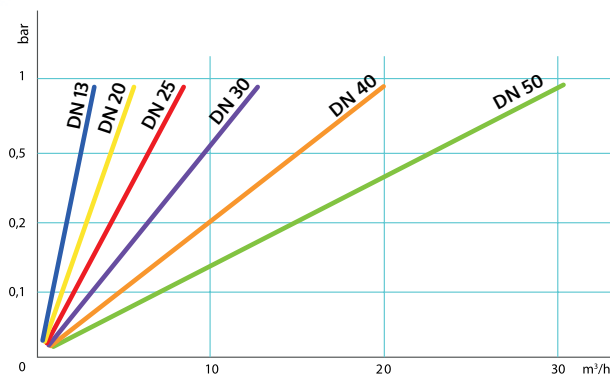
* It replaces the MID 2004/22/CE Directive.

Metrological class MID (Q₃/Q₁) R = 80

TYPICAL ERROR CURVE

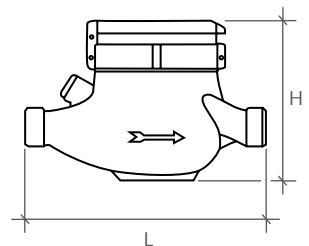


PRESSURE LOSS DIAGRAM

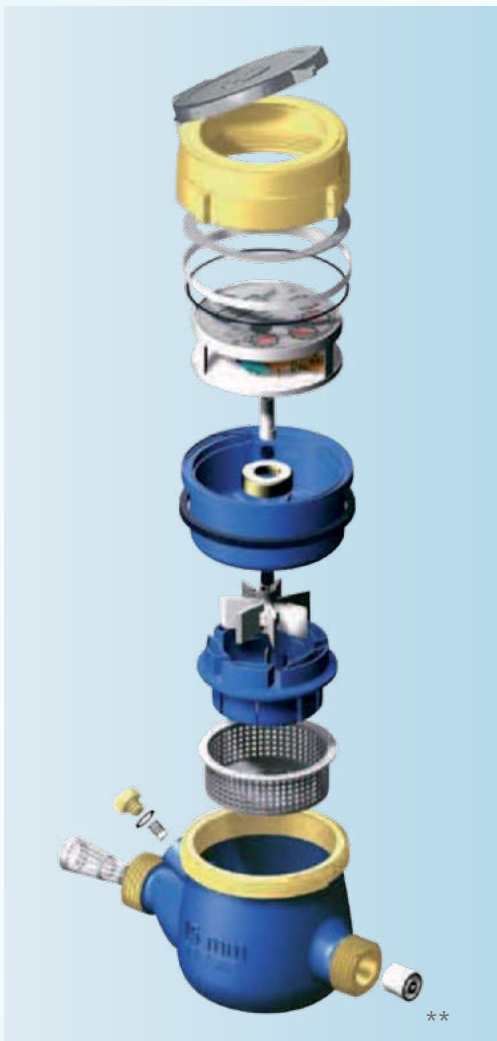


DIMENSIONS

(mm) SIZE (inch)	13/15	20	25	30	40	50 *
L (mm)	110 - 145 165 - 170	160 190	160 260	160 260	200 - 300	300
H (mm)	105	110	115	120	150	180 fil 190 fla
TOTAL LENGTH OF CONNECTORS (mm)	80	100	100	120	140	160



Rev. 4/2017 The content of this data sheet is intended to give general information only, we reserve the right to make alterations without prior notification



**

** non return valve on request

* body in cast iron, available also in flanged version.

For additional information and options, do not hesitate to contact us

WATERTECH S.P.A. - Water meters

Factory, commercial main office and administration: Str. Antica Fornace, 2/4 • 14053 Canelli (AT) – Italy
Tel +39 0141 822106-832151 • **Fax** +39 0141 832191-832198 • **Mail** info@wtmeters.it • **Web** www.wtmeters.it